

Architects / Landscape Architects: Z+T Studio, Landscape Architecture | Location: Hangzhou, China

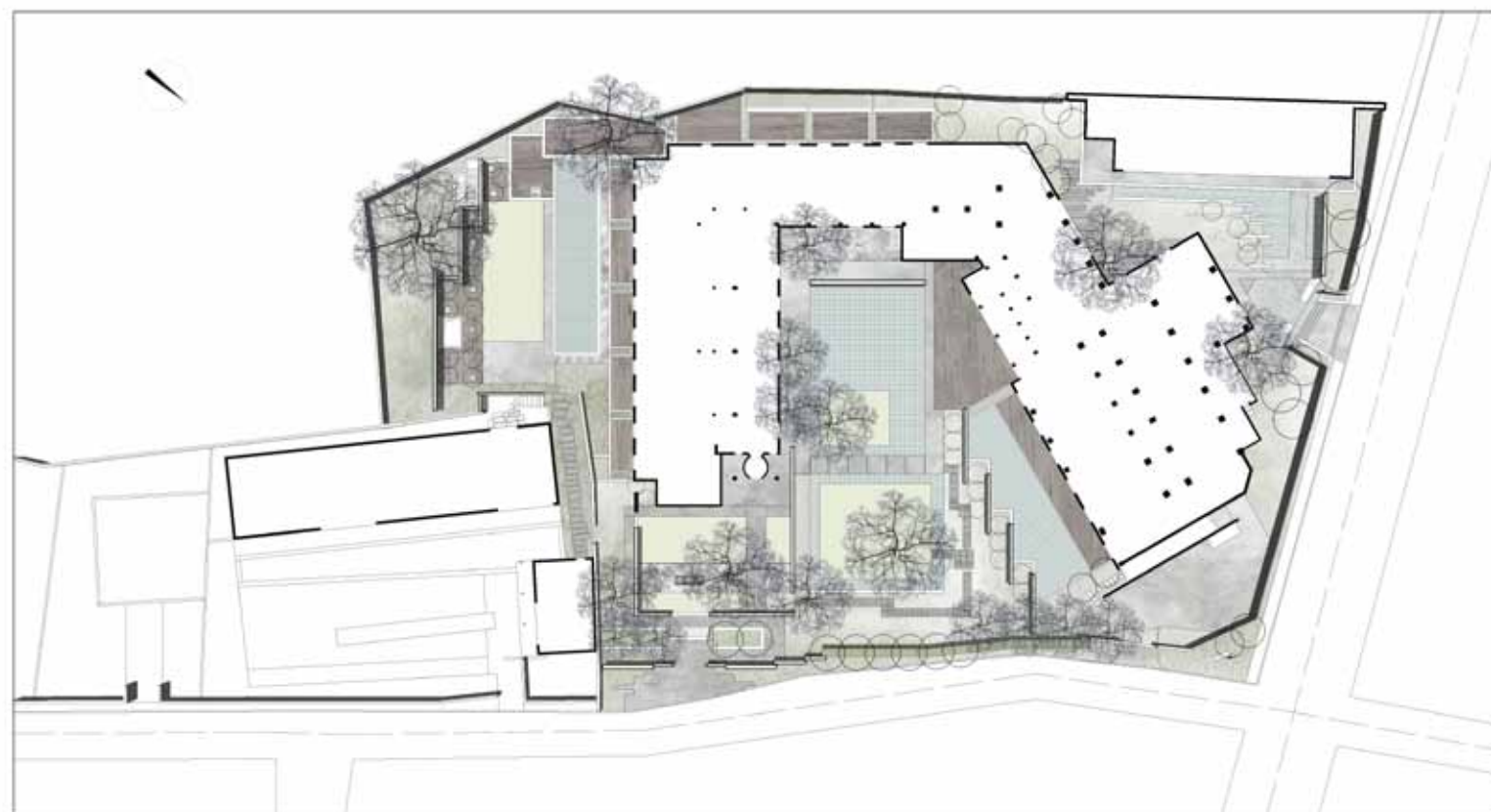


Pins de la Brume Hotel

Features:

1. Through thoughtful control of light and shadow, changing reflection and flowing water, the design tries to facilitate communication between man and nature.
2. The slabs of the landscape wall are stacked randomly with projections and recesses, providing a perfect structure for cascading water.
3. The existing big trees, mainly evergreen *Cinnamomum camphora*, were added with newly planted small blooming ones.

1. The memorial park honors the fire service of fallen Canadians.
2. People visit the memorial park.



Project Name:
Pins de la Brume Hotel

Completion Date:
2013

Z+T Team:
ZHANG Dong, TANG Ziyang, ZHANG Yanan, XUE Anan, FAN Yanjie, ZHANG Qing, ZHENG Jialin, WU Yefei

Architects:
Green Town Oriental Construction, Zhejiang, China

Interior Design:
paldesign

Developer:
Pins de la Brume Hotel Co., Ltd., Hangzhou

Site Area:
6,850sqm

Photography:
Zhang Hai



Pins de la Brume Hotel is located on Lingyin Road within a tourist attraction near the West Lake in Hangzhou, Zhejiang Province, China. The site faces West Lake and Xixi Wetland on the west, with the historic Lingyin Temple on the north. The U-shaped hotel architecture opens to a vast tea garden. This is a renovation project surrounded by a nature reserve, which requires the reuse of the original materials and retaining the existing large, old trees. The renovated architecture and new landscape elements should conform to the regulations in the reserve in terms of height, color, materials and plants.

The landscape scheme consists of five areas; the entrance courtyard, the central courtyard, the dining courtyard, the backyard behind the swimming pool, and the roof garden. Starting from the consideration to create a reasonable sequence and retain the existing trees, the

landscape architects tried to approach the site with a contemporary, minimal design, reflecting the aesthetics of Chinese traditional courtyards and establishing a tranquil, peaceful atmosphere. Through thoughtful control of light and shadow, changing reflection and flowing water, the design tries to facilitate communication between man and nature.

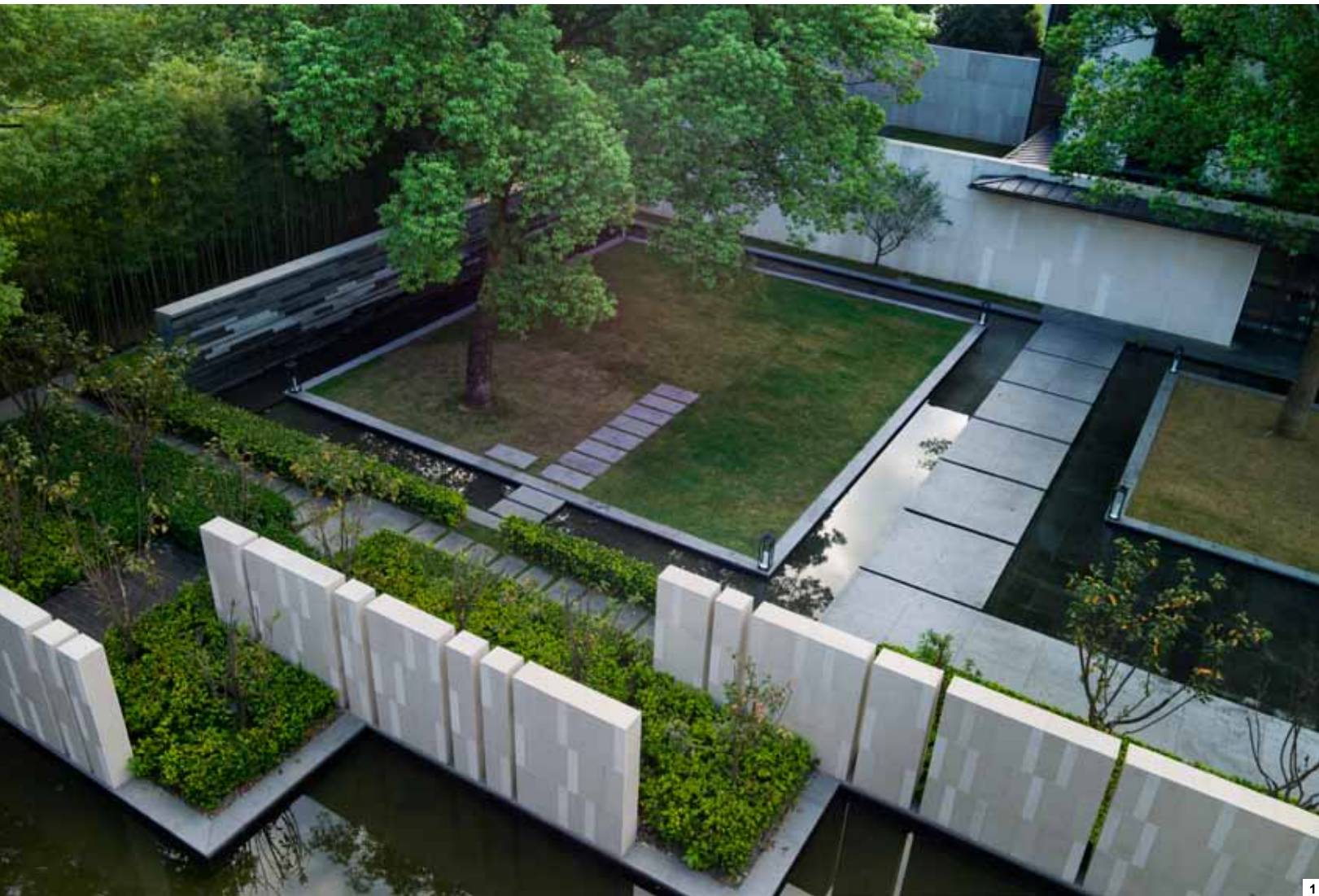
In terms of material, gray granite is mainly used. A granite wall is built with three main colors: black, white and gray. The slabs are stacked randomly with projections and recesses, providing a perfect structure for cascading water, mimicking the natural scenery of mountains and streams. Other protecting walls (higher than man's eye sight) are constructed with granite with warm colors, the same as that of the architecture.

The central courtyard is a highlight, which

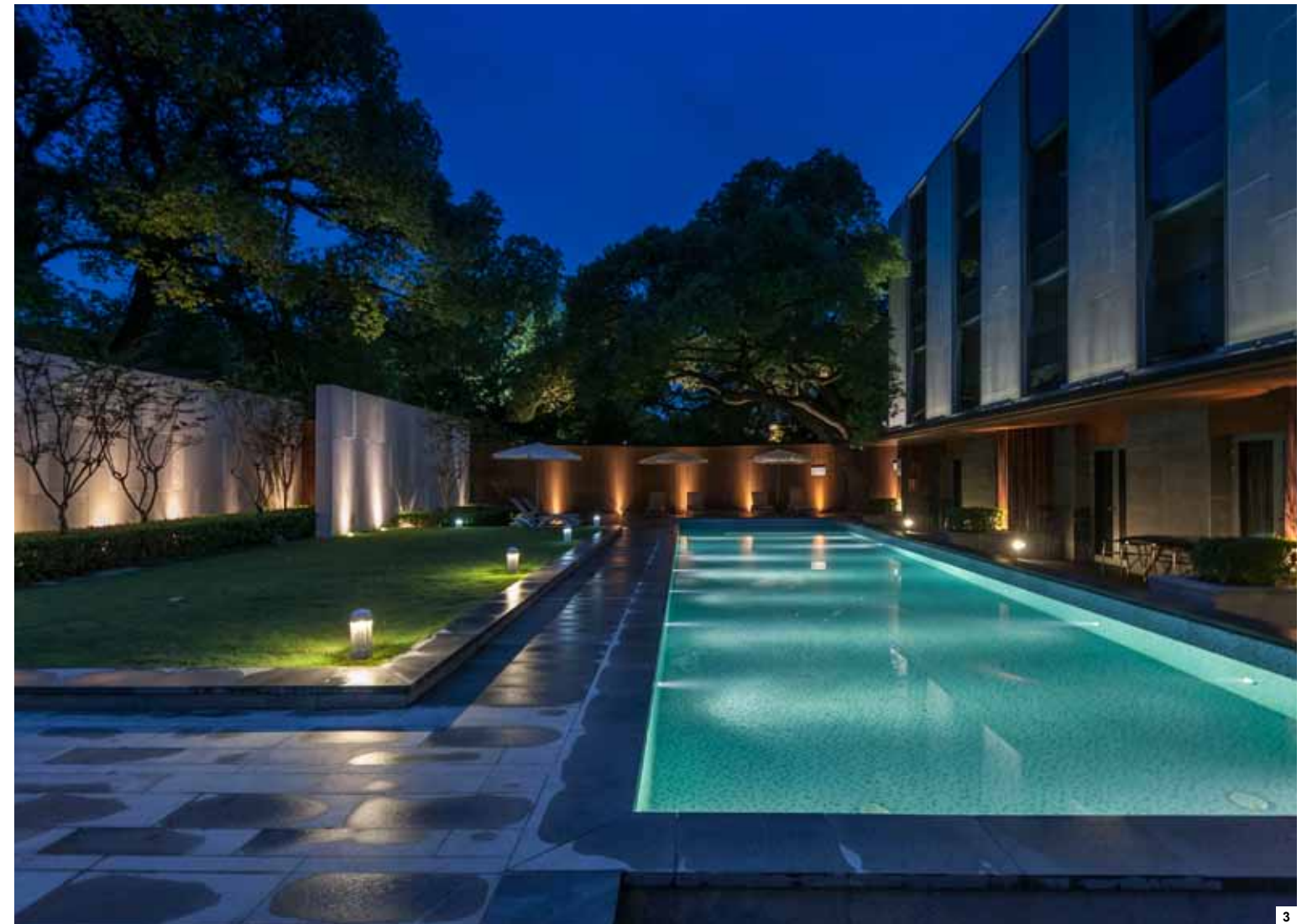
consists mainly of a rectangular reflection pool, with two existing trees retained on different levels in the center. One of them grows on the square lawn "floating" on the water; the other is planted on a square lawn bordered by narrow channels on all sides. A central path connects to the lobby and the restaurant. Four landscape walls act as screens on both sides, protecting privacy of the restaurant, while allowing for required communication between the hotel interior and the outside courtyard.

Pins de la Brume Hotel is a five-star international business boutique hotel, with a total floor area of 5,500 square meters and 42 guestrooms, a restaurant, swimming pools and spa facilities. A multi-functional banquet hall of about 300 square meters is connected to an open-air lawn. Two

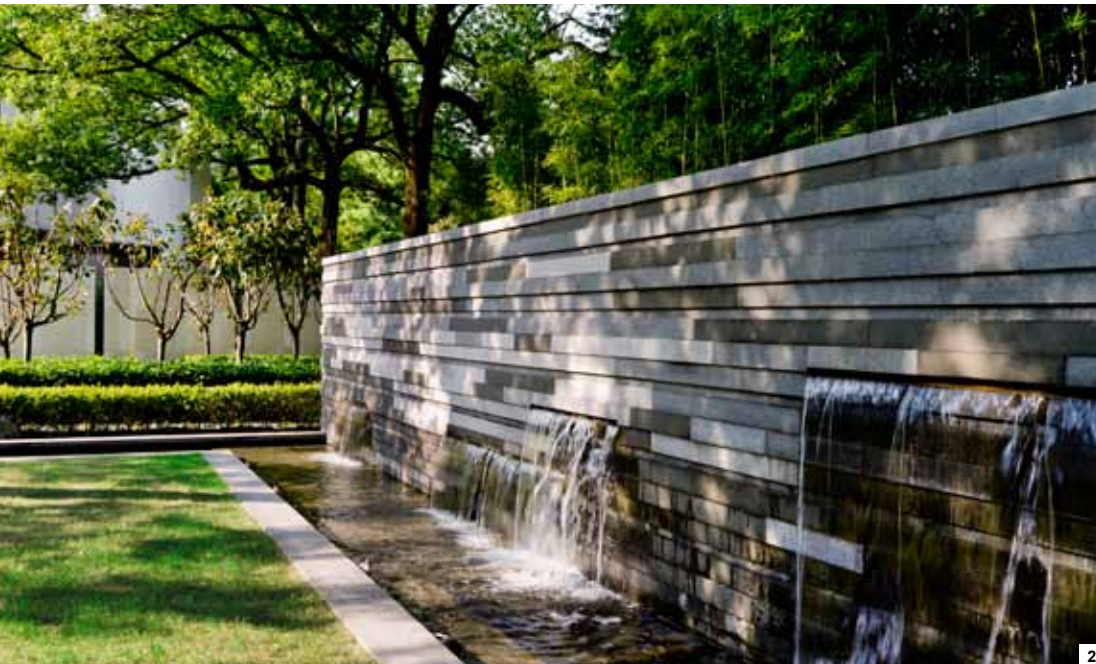
1. Sloped Grove



1



3



2

outdoor terraces, each with an area of 400-500 square meters, can accommodate more than 300 people to hold wedding ceremonies, exhibitions, conventions, receptions and parties.

The existing big trees, mainly evergreen *Cinnamomum camphora*, were added with newly planted small blooming ones, such as *Lagerstroemia indica* in front of the swimming pool terrace, *Prunus subhirtella* between the screen walls along the central courtyard, and *Phyllostachys* along the walls and in corners all around. Shade-tolerant, evergreen shrubs were selected, including *Lobular gardenia*, *Holly*, *Boxwood*, *Mediterranean Viburnum*, and *Fatsia*.

